

Ingestible Props

Production Safety Guidelines

PS_GUID_EXT PROPS - INGESTIBLE v0

Prepared by
Enterprise Risk Management – Production Safety

Date	Description of Revision	Rev. #
6/17/24	Initial publication	0

Hardcopy printouts of this program are uncontrolled and may not reflect the latest release.
Current revision status can be confirmed by accessing: <https://sites.disney.com/wdproductionsafety>

Ingestible Props

Table of Contents

1.0	Purpose.....	2
2.0	Scope	2
2.1	Ingestible Props	2
2.2	Inhalable Props	2
2.3	Set Dressing- Non-Ingestible Props	2
2.4	Miscellaneous	2
3.0	Responsibilities	2
3.1	Production Management.....	2
3.2	Prop Master	2
3.3	Production Safety	3
4.0	Operational Procedure	3
4.1	Sourcing	3
4.2	Preparation.....	3
4.3	Labelling.....	3
4.4	Distribution & Control	4
4.5	Disposal of Ingestible Props.....	4
4.5.1	Expired	4
4.5.2	Wrap & Strike.....	4
4.6	Inspection & Inventory	4
4.7	Minors	4
4.8	Reporting	4

Ingestible Props

1.0 Purpose

These guidelines are intended for Production Management / Prop Masters related to the safe handling, use, and storage of ingestible props. These props include, but not limited to medications, drugs, cigarettes, simulated vomiting, eye drops, etc. Regulatory requirements and company policy must be adhered to regarding the use of ingestible and inhalable props.

2.0 Scope

This guideline applies to any ingestible or inhalable props planned for use by cast members. For the purpose of this guideline, any props that may be ingested, inhaled, or otherwise consumed by cast will be referred to as “ingestible props.” This includes but not limited to:

2.1 Ingestible Props

Props that are taken by mouth that include but are not limited to medication, drugs or tablets in pill form. This does not include food and drink.

2.2 Inhalable Props

Props that are inhaled or “snorted” through the nose that include but are not limited to cigarettes or other smoking props, powder “snorted” through nose, inhalers, vape devices, etc.

2.3 Set Dressing- Non-Ingestible Props

Productions on occasion display drugs as part of set dressing that may include but are not limited to pill bottles, pills, powder on table, medicine cabinets, etc.

2.4 Miscellaneous

Other props that may be used including but not limited to eye drops, blood, vomit, fake tears, etc.

3.0 Responsibilities

3.1 Production Management

The Producer and Production Manager have the ultimate responsibility for ensuring Production Safety Programs are implemented. They must ensure that qualified and experienced individuals are hired in all positions (including the Prop Master), and that those people are following safety protocols within these guidelines, as well as regulatory requirements that may apply.

3.2 Prop Master

The Prop Master will be the individual acting in the interest of the Producer for obtaining, maintaining, and handling all ingestible props for the production. Prop masters are responsible for ensuring ingestible props have been sourced from a reputable manufacturer or distributor. Ensure Production Management and Production Safety is aware of the planned use of ingestible props. Ensure the ingestible props inventory is completed and kept up to date for the duration of the production and submitted to Production Safety at the end of production. The props department must maintain all ingredient lists or Safety Data Sheet (SDS) for any ingestible props used.

Rev #0	PS_GUID_EXT PROPS - INGESTIBLE v0	Page 2 of 5
6/17/24	Hardcopy printouts of this guideline are uncontrolled and may not reflect the latest release. Current revision status can be confirmed by accessing: https://sites.disney.com/wdproductionsafety/	

Ingestible Props

3.3 Production Safety

Production Safety is responsible for supporting productions by providing checklists, operational protocols, ongoing guidance, consultation, and auditing compliance. Production safety is responsible for orienting the prop master with information in this guideline. Review scripts, schedules, and production activity notification checklists to identify potential use of ingestible.

4.0 Operational Procedure

4.1 Sourcing

All props that are to be ingested by cast on set must be sourced from a reputable manufacturer or distributor, specifically by the particular production and for the needs of production. Ingestible Props (sealed or unsealed) from previous productions and/or existing inventory contained within a prop master's "kit" must not be used under any circumstance. All purchased ingestible props must be sealed and accompanied by a safety data sheet or other informational document listing ingredients (see Exhibit A) and its safe use for consumption.

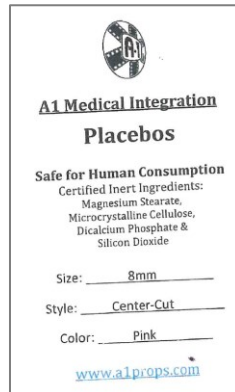


Exhibit A: Example ingredient list for placebo tablet

4.2 Preparation

All ingestible props must be prepared in a clean and sanitary area. When handling ingestible props, the preparer must ensure hand washing and/or use of disposable gloves (i.e., nitrile gloves).

When ingestible props are not sourced from a manufacturer, but rather created by the props department, additional personal hygiene practices may be necessary.

*****Under no circumstances should actual medication or other ingestible products be used in the vicinity during the preparation of ingestible props. i.e. OTC medications, vitamins, tums, etc.*****

4.3 Labelling

All manufacturer ingestible prop containers shall be labeled with a product name and ingredients. The label can be the primary manufacturer label affixed to the packaging or a secondary label placed by the prop master identifying the contents of the packaging. Any ingestible prop within a prop container used for a scene may be used with or without labeling required for the scene, however, it must be returned to the original labeled container once the scene is complete.

Rev #0	PS_GUID_EXT PROPS - INGESTIBLE v0	Page 3 of 5
6/17/24	Hardcopy printouts of this guideline are uncontrolled and may not reflect the latest release. Current revision status can be confirmed by accessing: https://sites.disney.com/wdproductionsafety/	

Ingestible Props

4.4 Distribution & Control

The Prop Master shall have absolute control over the distribution of ingestible props to cast or props department personnel. Only competent props department personnel under the direct supervision of the prop master may handle or distribute ingestible props.

The Prop Master shall determine if the cast member has allergies to any of the ingredients contained in the prop prior to distributing. The cast member must receive a brief description of the ingestible prop by the Props Department and have the opportunity to ask questions or voice concerns.

The Prop Master must maintain a strict chain of custody of ingestible props for the duration of the production. At no time shall any other department (other than Props) be in possession of the ingestible props other than performers using them in a scene. Exceptions can be made for a technical advisor if for demonstration purposes in the presence of the Prop Master. Ingestible props shall be stored in a secure location that is protected from access by unauthorized personnel.

4.5 Disposal of Ingestible Props

4.5.1 Expired

If applicable, ingestible props that have expired must be immediately disposed of.

4.5.2 Wrap & Strike

When production has concluded (season end or film wrap), all ingestible props, sealed or unsealed, must be disposed of. Ingestible props may not be retained for future seasons or projects, or kept by the prop master for his/her "kit."

4.6 Inspection & Inventory

The Props Department must inventory all ingestible props before and after each use and at the close of each day. Production needs to allow time in its schedule for this procedure.

The Ingestible Props inventory form must be completed and up-to-date for the duration of production. The form must include:

- Key personnel
- Proposed use
- Date of purchase, purchase location, amount, and type of prop
- Used inventory including shoot day, scene number and amount used
- Number of props disposed of

[Click here for link to Ingestible Props Inventory Form.](#)

4.7 Minors

Should a scene require a minor to ingest or inhale any products, the parent/legal guardian, Studio Teacher, Production Safety, and Standards and Practices all must consent to the activity. A primary consideration should be whether the minor has any allergies, respiratory limitations, or other medical conditions that could be affected.

4.8 Reporting

Production Management, the Production Executive and Production Safety must be immediately notified of any ingestible prop-related incidents or deviations of the above protocols.

Rev #0	PS_GUID_EXT PROPS - INGESTIBLE v0	Page 4 of 5
6/17/24	Hardcopy printouts of this guideline are uncontrolled and may not reflect the latest release. Current revision status can be confirmed by accessing: https://sites.disney.com/wdproductionsafety/	